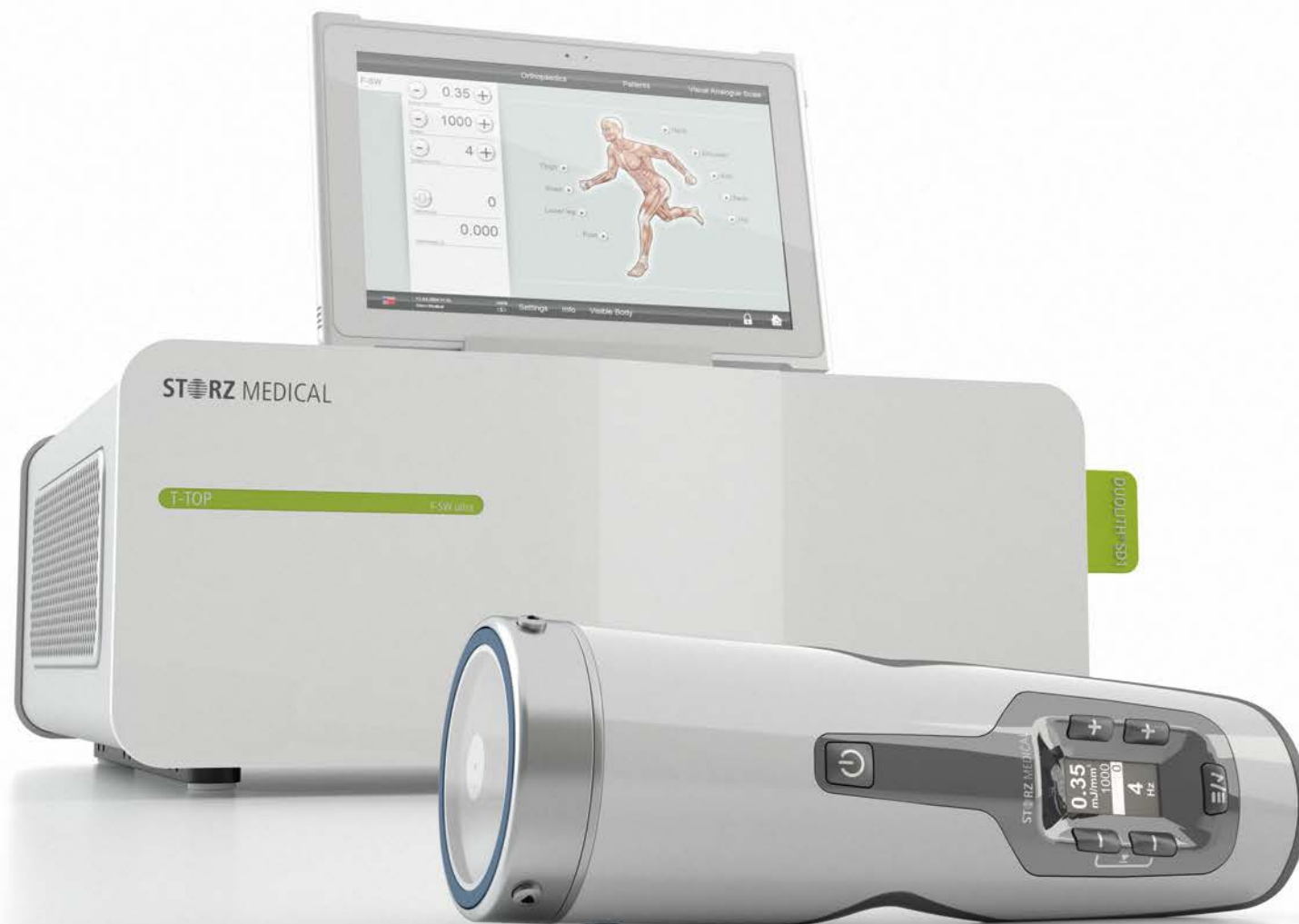


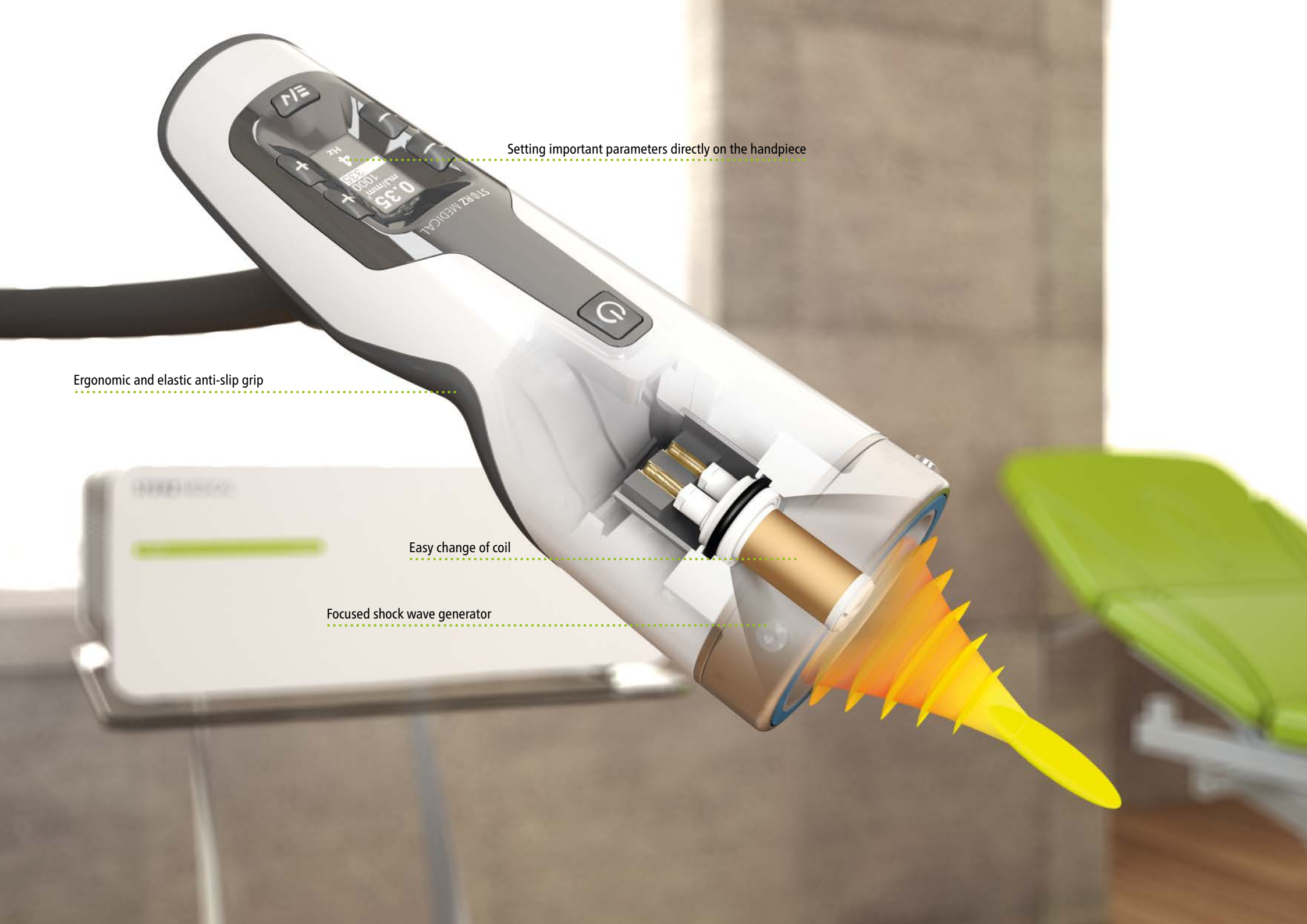


the
art of
shock
wave

DUOLITH® SD1 T-TOP »ultra«
Focused shock wave therapy



STORZ MEDICAL



Setting important parameters directly on the handpiece

Ergonomic and elastic anti-slip grip

Easy change of coil

Focused shock wave generator

DUOLITH® SD1 T-TOP »ultra« – Focused shock wave therapy

The design of the DUOLITH® SD1 »ultra« with the SEPIA® handpiece is impressive with its high-quality workmanship and optimised ergonomics. The particular flexibility of the handpiece cable ensures maximum user comfort during treatment, which is always carried out directly on the patient – an important criterion for everyday practice.

The SEPIA® handpiece makes treatments using focused shock waves simple and efficient. All essential controls have been integrated into

the handpiece. The frequency and energy level are adjustable directly on the handpiece.

Beneficial for users: The stand-offs supplied can be used to adjust the penetration depth individually to the indication. Users benefit from reduced service costs thanks to the simple coil replacement. Exclusive customer access to the »Shock Wave Portal« offers helpful information.

Highlights

- Effective and comfortable work directly on the patient
- All controls integrated into the handpiece
- Reduced service costs thanks to simple coil replacement
- Optional: C-ACTOR® handpiece with extended energy range
- Exclusive online access to the »Shock Wave Portal« for more knowledge (www.shockwaveportal.com)

DUOLITH® SD1 T-TOP »ultra«
with focused handpiece SEPIA® and optional 10" touch screen

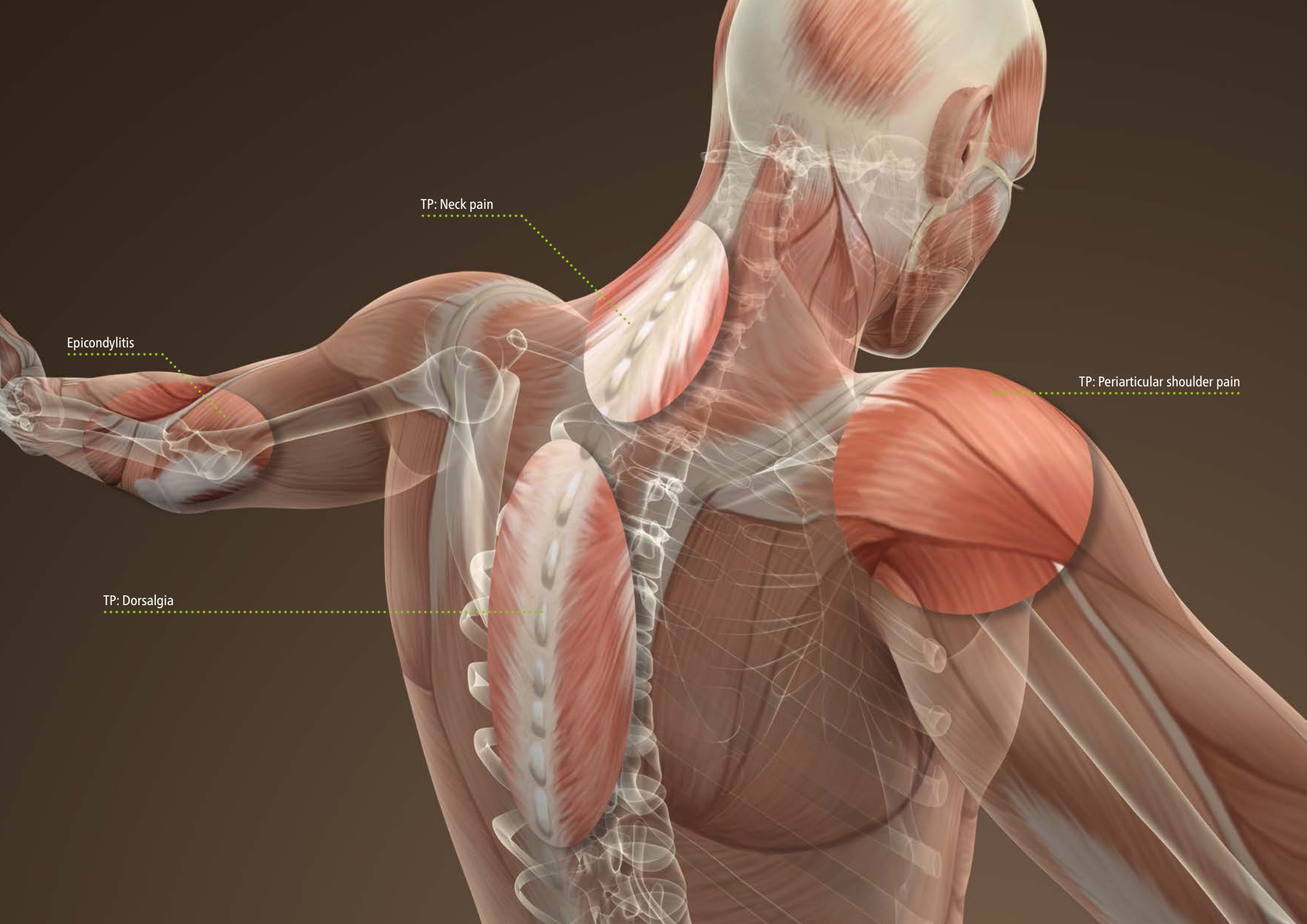


Focused handpiece SEPIA® with and without stand-off



Handpiece display – integrated controls





TP: Neck pain

Epicondylitis

TP: Periarticular shoulder pain

TP: Dorsalgia

Examples of the wide range of DUOLITH® SD1 T-TOP »ultra« indications

The most important aspect for patients suffering from pain is probably for the effects of shock wave therapy to be felt as soon as possible after

treatment. The DUOLITH® SD1 T-TOP »ultra« offers a promising solution for these high patient expectations.

Highlights

- Depth of focal zone: 0 – 65 mm
- Penetration depth: up to 125 mm

Achillodynia



Plantar fasciitis



Patellar tendinitis



Epicondylitis



Tibial stress syndrome



Calcific tendinitis



Trigger points: Calf muscles



Trigger points: Lumbago





Touch screen – The ideal extension for the DUOLITH® SD1 T-TOP »ultra«

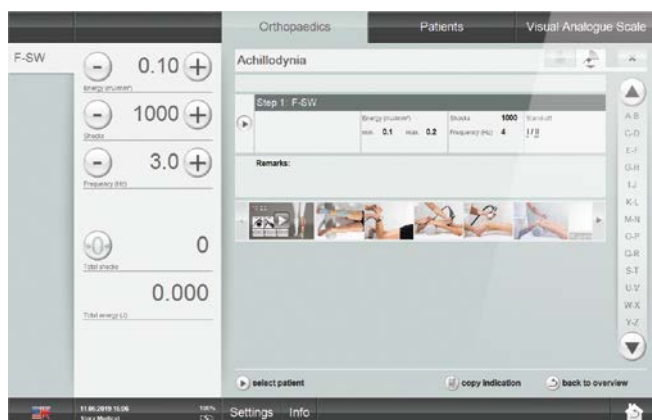
The optional 10" touch screen connects to the shock wave device via a USB cable and extends it with valuable features: Besides the additional device control, it offers patient management as well as treatment parameters recommended by experienced users, which are supported with videos and images. These can be called up and applied. The integrated Visible Body® software allows not only detailed visualization

of muscular structures but also a deep »dive« into the human body at different levels. Detailed definitions and information on anatomies offer support for users. Rotating and moving 3D models allow muscle movements, pathologies and diseases to be visualised. This makes a new type of interaction between user and patient possible.

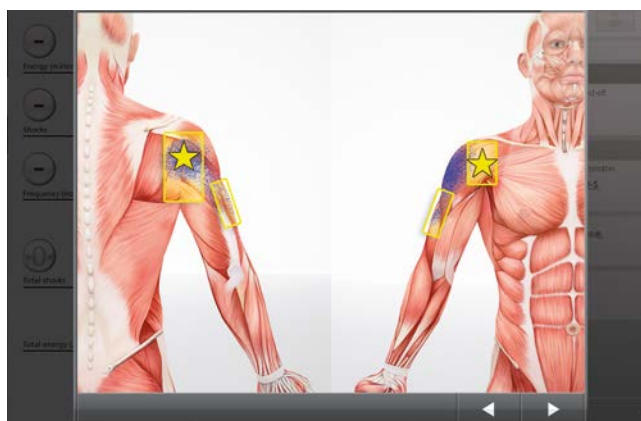
Highlights

- 10" touch screen (optional)
- Patient management with treatment history
- Video and image-based treatment parameters
- Visible Body® digital anatomy atlas

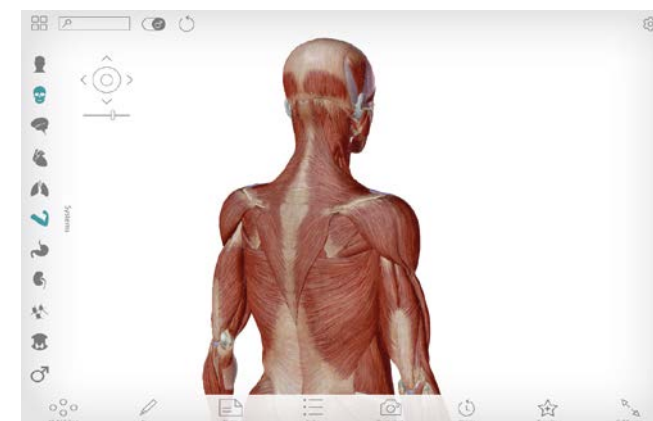
Treatment parameters with application videos



Overview of pain zones



Visible Body® digital anatomy atlas





www.storzmedical.com



HUMANE TECHNOLOGY – TECHNOLOGY FOR PEOPLE



Urology



Orthopaedics



Neurology



Cardiology



Dermatology



Veterinary

STORZ MEDICAL

STORZ MEDICAL AG · Lohstampfstrasse 8 · 8274 Tägerwilten · Switzerland

Tel. +41 (0)71 677 45 45 · Fax +41 (0)71 677 45 05 · info@storzmedical.com · www.storzmedical.com

Subject to change without notice. The information in this document is only intended for medical and healthcare professionals. This document provides information on products/indications that may not be available/relevant in all countries. The following products referred to or shown in this document are provided by our technology partners to complete the DUOLITH® SD1 »ultra«: Visible Body®